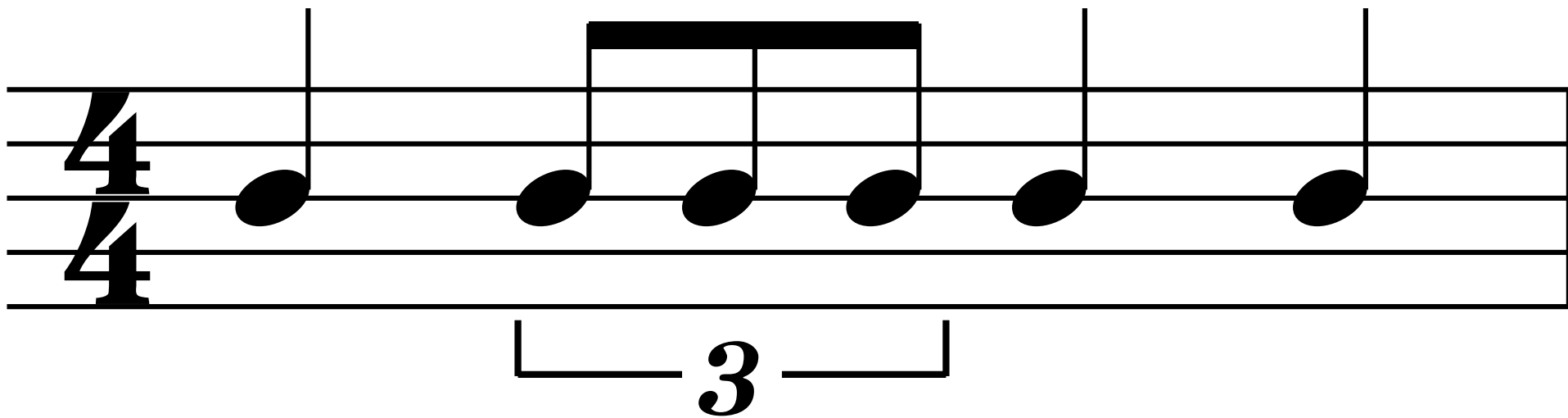
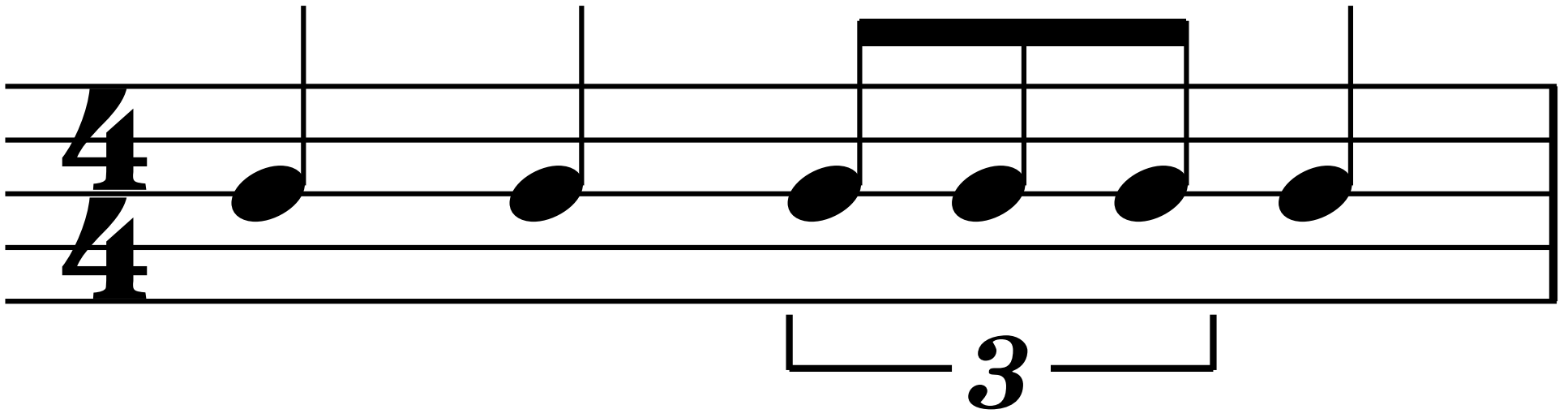
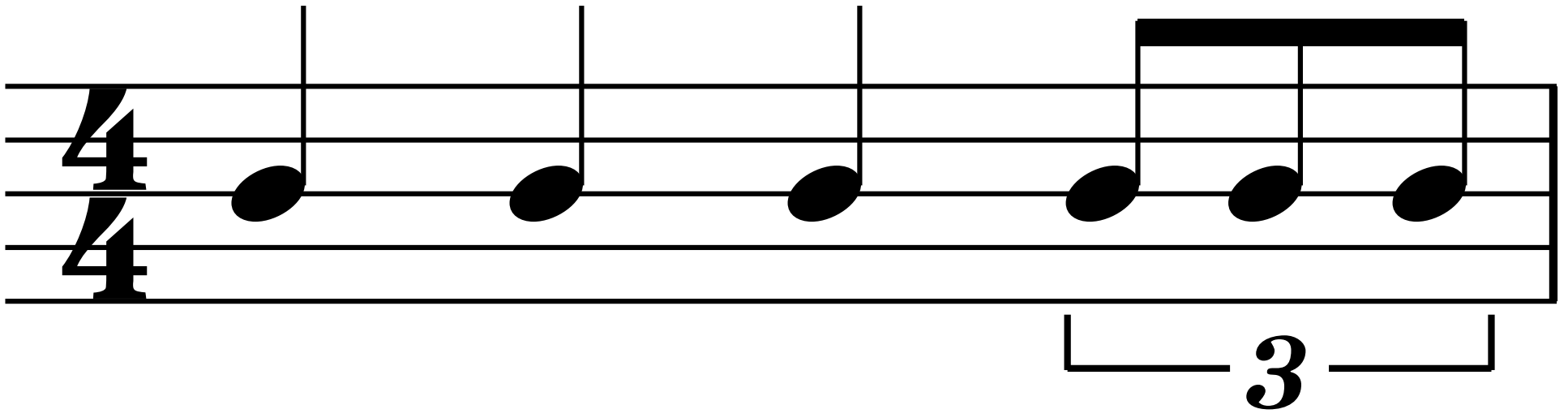


A musical staff with five horizontal lines. On the left side, the time signature $\frac{4}{4}$ is written vertically. The staff contains six quarter notes, each with a solid black oval head and a vertical stem. The first three notes are grouped together by a horizontal bracket underneath them, with the number '3' centered below the bracket, indicating a triplet. A thick black horizontal bar is drawn above the first three notes, spanning the width of the triplet. The remaining three notes are spaced evenly across the rest of the staff.







A musical staff with five horizontal lines. On the left side, the time signature $\frac{4}{4}$ is written vertically. The staff contains eight eighth notes, each with a solid black oval head and a vertical stem. The first two notes are grouped by a horizontal bar above them, and the next two notes are also grouped by a horizontal bar above them. Below the staff, there are two bracket-like markings, each with the number '3' centered underneath. The first bracket spans the first three notes, and the second bracket spans the next three notes. The eighth note is not included in either triplet.

4/4

3

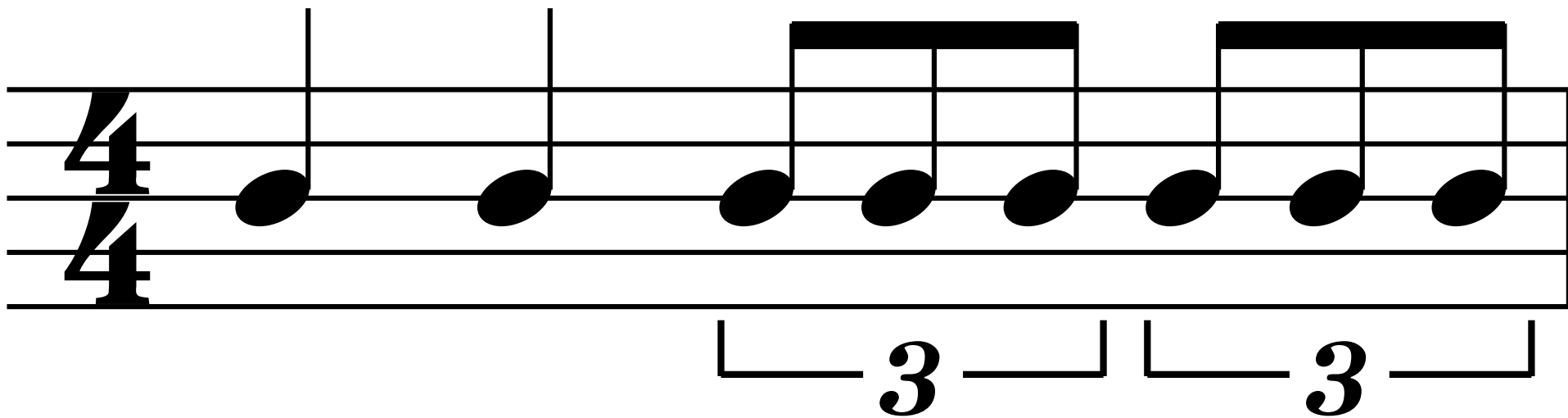
3

4/4

3

3

Detailed description: The image shows a musical staff with five lines. On the left, a 4/4 time signature is written. The melody is composed of eight quarter notes. The first note is on the second line (G4). The next three notes (A4, B4, C5) are grouped by a bracket with a '3' below them, indicating a triplet. The final three notes (B4, A4, G4) are also grouped by a bracket with a '3' below them, indicating another triplet. The eighth note (F4) is a quarter note on the first line. The notes A4, B4, and C5 are beamed together, as are the notes B4, A4, and G4.



4/4

3 3 3

Detailed description: The image shows a musical staff with five horizontal lines. On the left side, the time signature '4/4' is written vertically. The staff contains ten notes. The first nine notes are grouped into three sets of three eighth notes each, with a thick black horizontal bar above each group. The tenth note is a single quarter note. Below the staff, three brackets are positioned under the first, second, and third groups of three notes, with the number '3' centered under each bracket to indicate triplet groupings.

4/4

3 3 3

Detailed description: The image shows a musical staff with five lines. On the left, a 4/4 time signature is written. The first measure contains a single quarter note. The second, third, and fourth measures each contain a triplet of eighth notes. Each triplet is indicated by a horizontal bracket above the notes and the number '3' centered below the staff. The notes are all black oval heads with stems pointing upwards.

A musical score on a five-line staff in 4/4 time. The notation consists of a sequence of eighth notes. The first measure contains four eighth notes, with the first three grouped by a brace and labeled with a '3' below, indicating a triplet. The second measure contains a single eighth note. The third measure contains three eighth notes, with the first two grouped by a brace and labeled with a '3' below, indicating a triplet. The fourth measure contains a single eighth note. The fifth measure contains three eighth notes, with the first two grouped by a brace and labeled with a '3' below, indicating a triplet. The sixth measure contains a single eighth note. The seventh measure contains three eighth notes, with the first two grouped by a brace and labeled with a '3' below, indicating a triplet. The eighth measure contains a single eighth note. The ninth measure contains three eighth notes, with the first two grouped by a brace and labeled with a '3' below, indicating a triplet. The tenth measure contains a single eighth note. The eleventh measure contains three eighth notes, with the first two grouped by a brace and labeled with a '3' below, indicating a triplet. The twelfth measure contains a single eighth note. The thirteenth measure contains three eighth notes, with the first two grouped by a brace and labeled with a '3' below, indicating a triplet. The fourteenth measure contains a single eighth note. The fifteenth measure contains three eighth notes, with the first two grouped by a brace and labeled with a '3' below, indicating a triplet. The sixteenth measure contains a single eighth note. The time signature '4/4' is written on the left side of the staff.

4

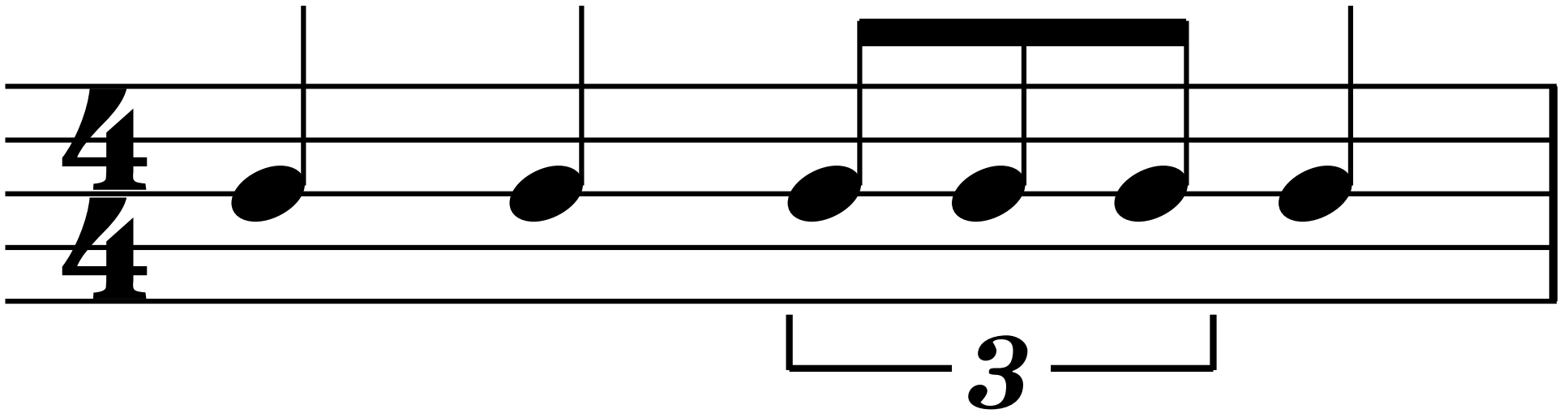
3 3 3

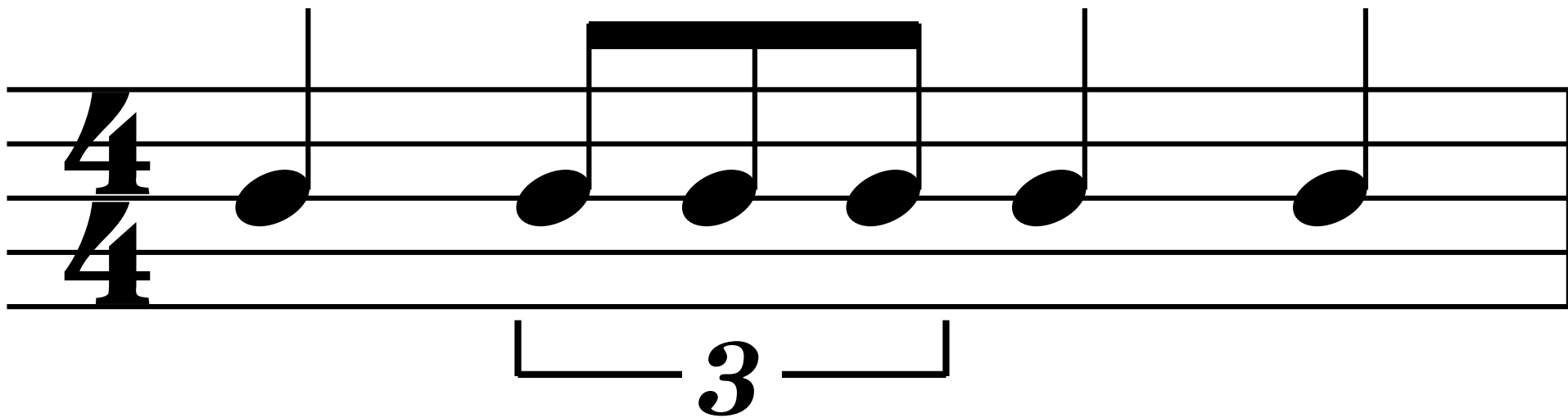
A musical score for a single staff in 4/4 time. The time signature is 4/4, with the '4' in the numerator and the '4' in the denominator. The melody consists of four groups of eighth notes, each group containing three notes. Each group is marked with a bracket and the number '3', indicating a triplet. The notes are placed on the second line of the staff. The first note of each triplet is on the second line, the second note is on the second space, and the third note is on the second line. The notes are beamed together, and each has a stem pointing upwards. The entire piece is enclosed in a rectangular box.

4/4

4/4

3





A musical staff with five lines. The time signature is 4/4, indicated by two '4's on the left. The melody consists of six notes on the second line from the bottom. The first three notes are grouped as a triplet, indicated by a bracket below them with the number '3'. A horizontal bar connects the stems of these three notes. The remaining three notes are quarter notes.

4/4

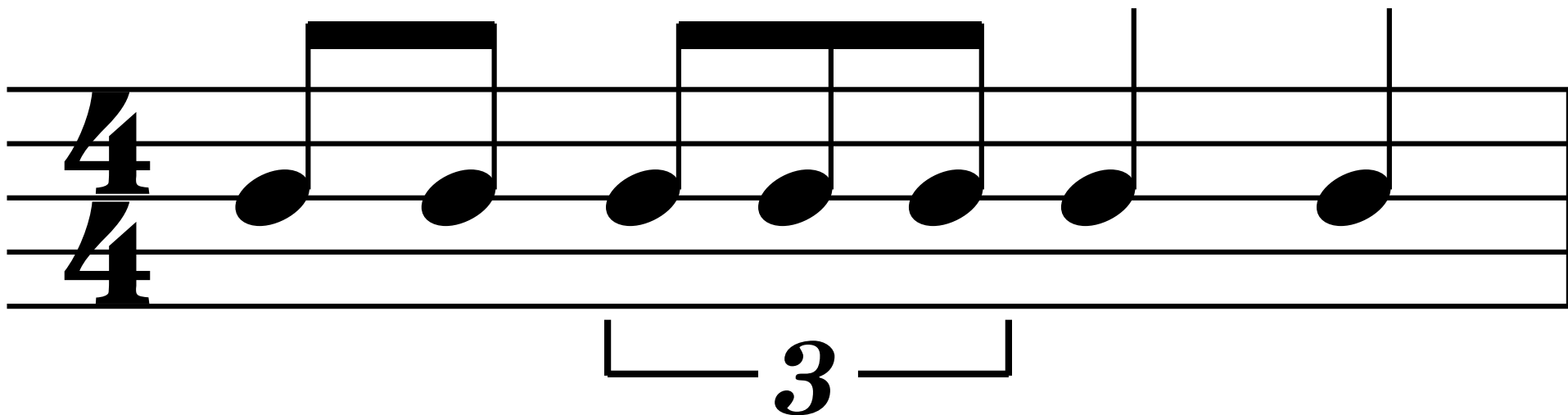
3

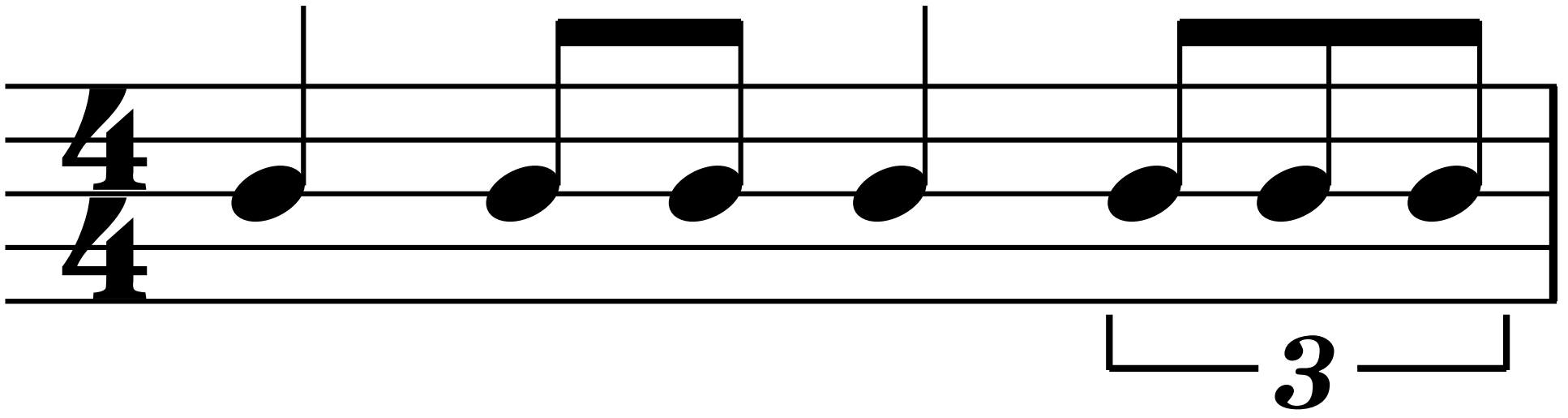
4/4

4/4

3

Detailed description: The image shows a musical staff with five horizontal lines. On the left side, the time signature '4/4' is written twice, once on the top line and once on the bottom line. The melody is written on the staff with eighth notes. The notes are: G4 (first space), A4 (second space), B4 (third space), C5 (fourth space), B4 (third space), A4 (second space), G4 (first space), and F4 (first line). A triplet bracket is drawn under the last three notes (G4, A4, B4), with the number '3' centered below the bracket.



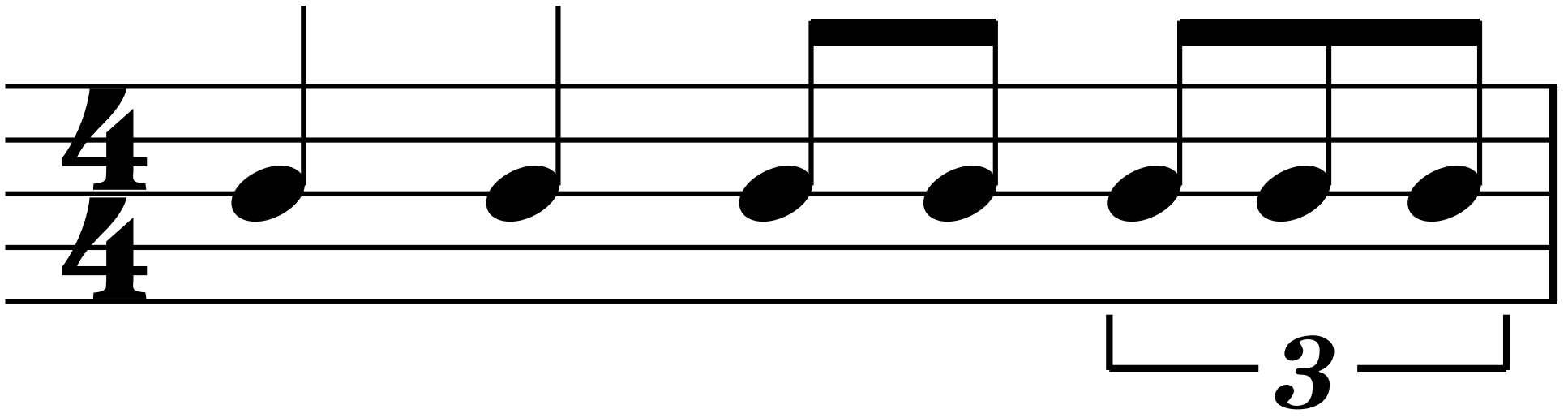


4/4

3

4/4

3

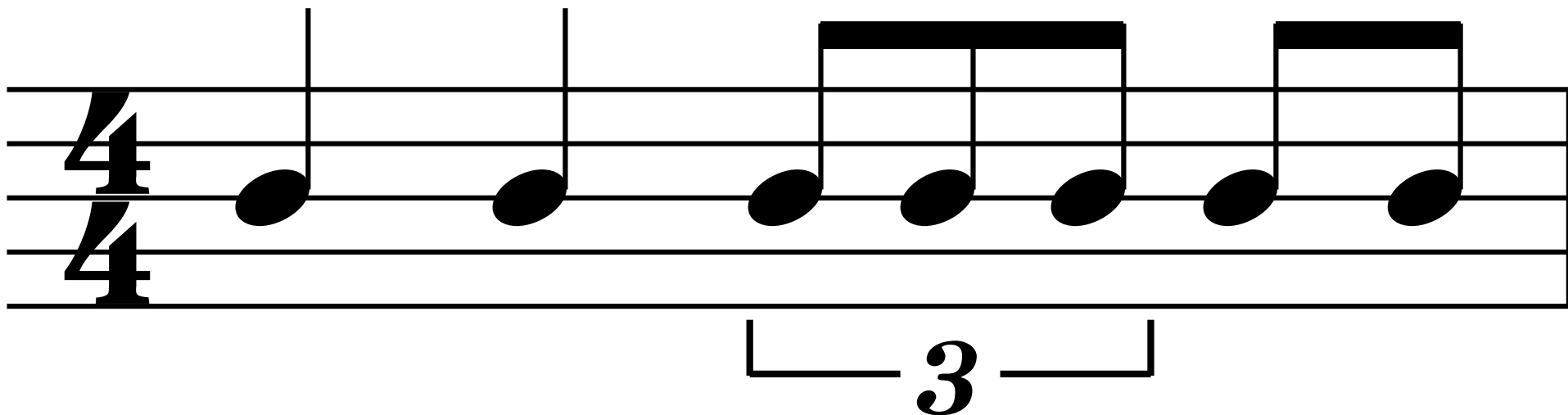


4/4

3

4/4

3



4/4

4/4

3

4/4

3

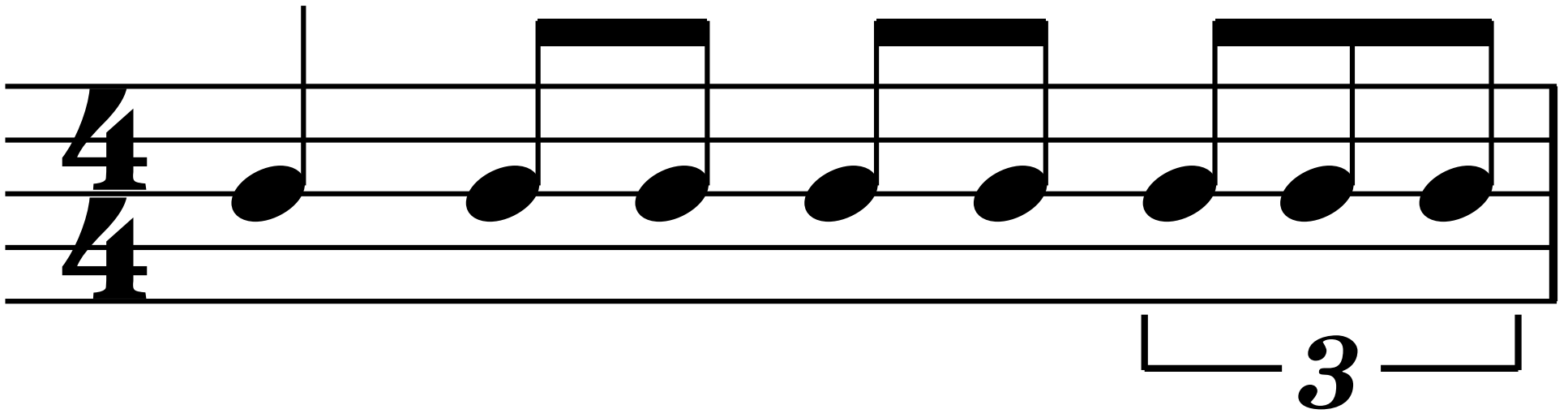
4
4

3

A musical staff with four horizontal lines. On the left side, a 4/4 time signature is written vertically. The staff contains a sequence of eight eighth notes. The first three notes are grouped together by a horizontal bracket above them, with a solid black bar on top of the bracket. The last three notes are grouped together by a horizontal bracket below them, with the number '3' centered under the bracket. The notes are positioned on the second line from the bottom of the staff.

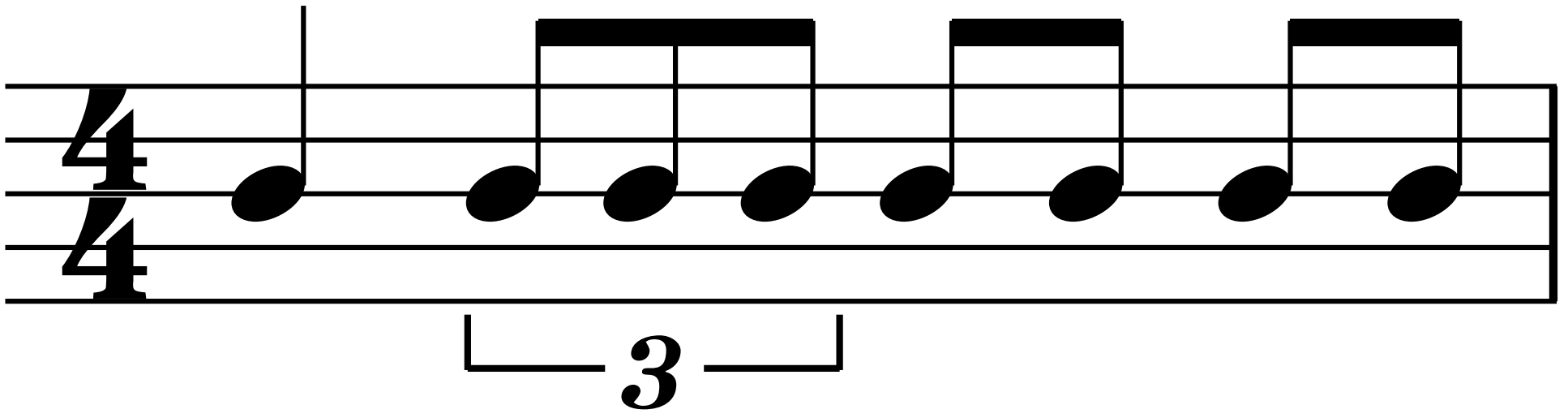
A musical staff with four horizontal lines. On the left side, a 4/4 time signature is written vertically. The staff contains a sequence of notes: a quarter note on the second line, followed by a triplet of eighth notes on the second line. The triplet is indicated by a bracket below the notes with the number '3' centered under it. The notes in the triplet are beamed together with a thick black bar above them. The notes are solid black ovals with stems pointing upwards.

A musical staff with five horizontal lines. On the left side, the time signature $\frac{4}{4}$ is written vertically. The staff contains a sequence of notes: a quarter note on the second line, a quarter note on the second space, a quarter note on the second space, a quarter note on the second line, a quarter note on the second space, a quarter note on the second space, a quarter note on the second line, and a quarter note on the second space. The first three notes are grouped together by a horizontal brace with a vertical line at each end, and the number '3' is centered below the brace, indicating a triplet. Additionally, there are three horizontal bars above the notes: one above the first two notes, one above the third and fourth notes, and one above the seventh and eighth notes.



4/4

3

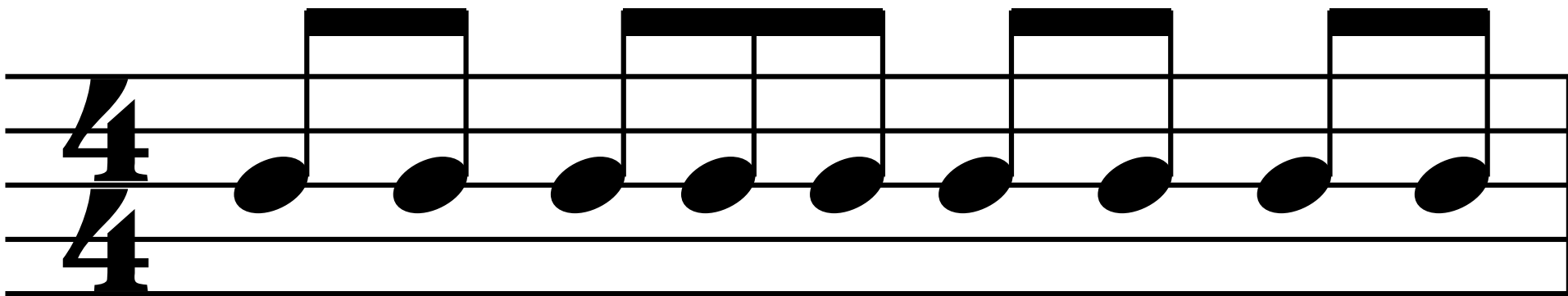


4/4

3

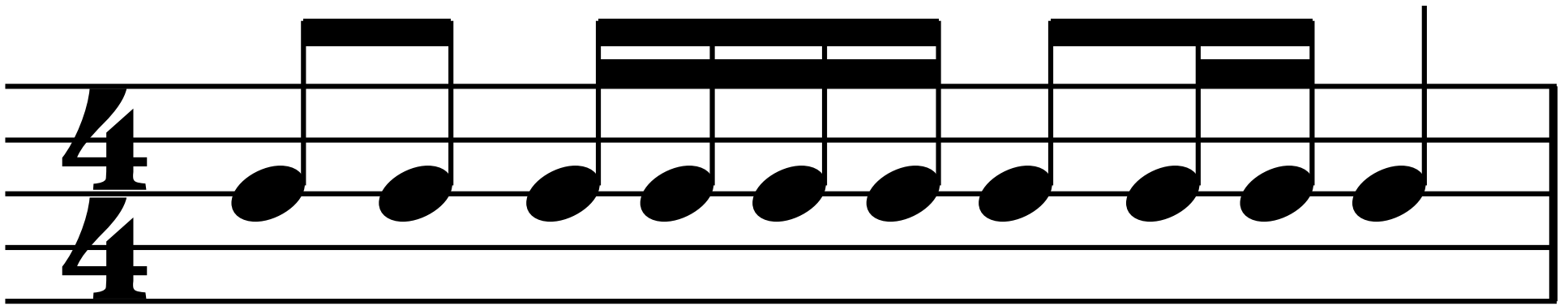
A musical staff with five lines. On the left, a 4/4 time signature is written vertically. The staff contains a sequence of nine eighth notes, all positioned on the second line from the bottom. The notes are grouped into four pairs, each pair connected by a horizontal beam. The final pair of notes is enclosed in a bracket with the number '3' below it, indicating a triplet.

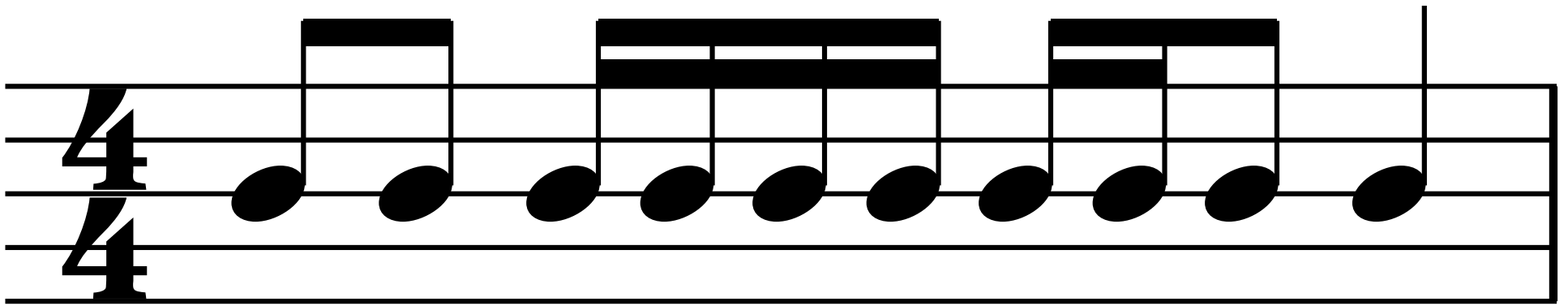
A musical staff with five horizontal lines. On the left side, the time signature $\frac{4}{4}$ is written vertically. The staff contains a sequence of ten eighth notes, all positioned on the second line from the bottom. The first three notes are grouped together by a bracket underneath, with the number '3' centered below the bracket, indicating a triplet. Each of the four pairs of notes (the triplet and three pairs of beamed eighth notes) has a thick black horizontal bar above it, connecting the stems of the notes in the pair.

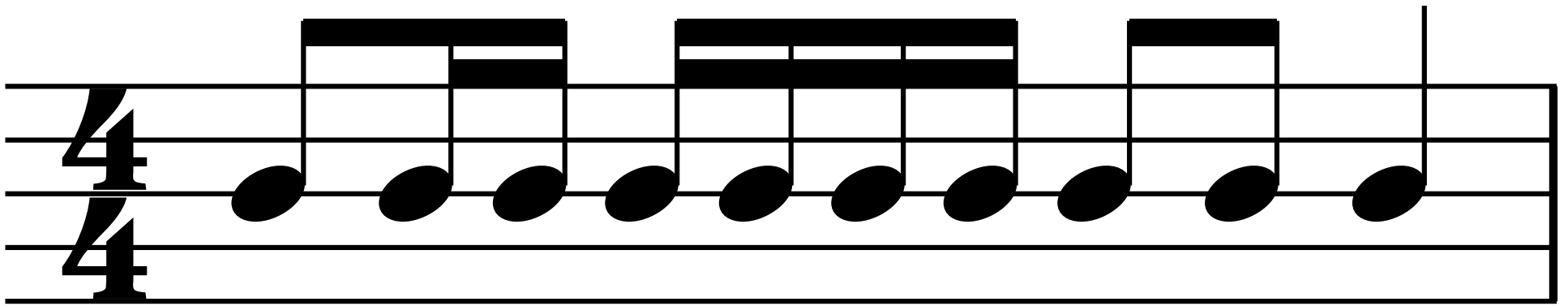


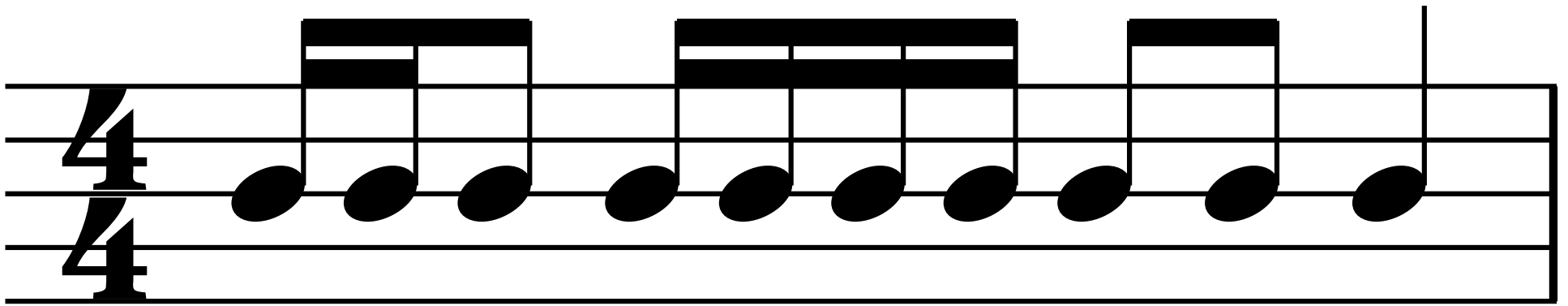
3

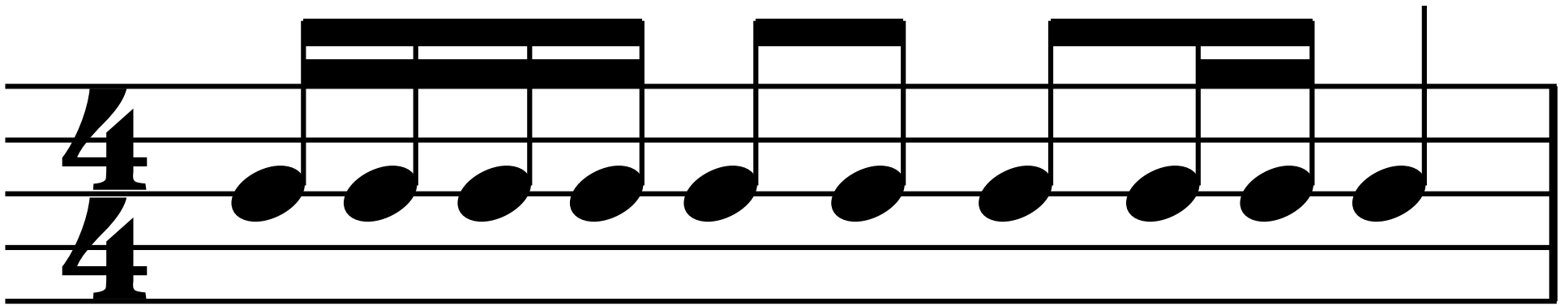
A musical staff with four lines. On the left side, the time signature $\frac{4}{4}$ is written vertically. The staff contains a sequence of eight eighth notes, all positioned on the second line from the bottom. The first four notes are grouped together by a horizontal bar above them. The last three notes of this group are also grouped together by a bracket below them, with the number '3' centered under the bracket, indicating a triplet. The notes are: G4, A4, B4, C5, D5, E5, F5, G5.

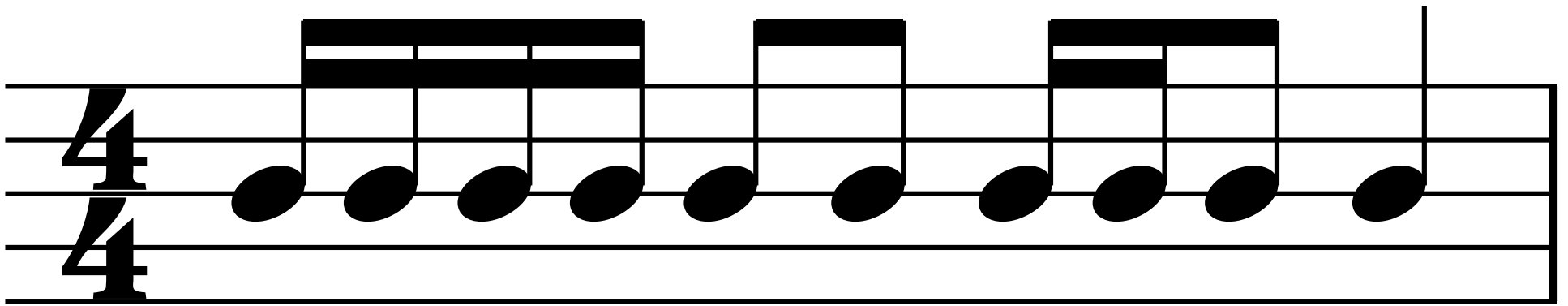












4/4

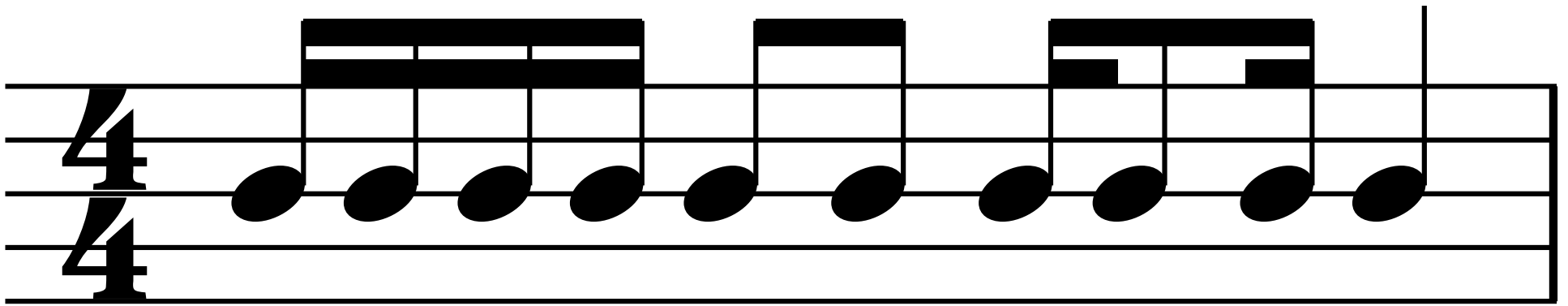
3

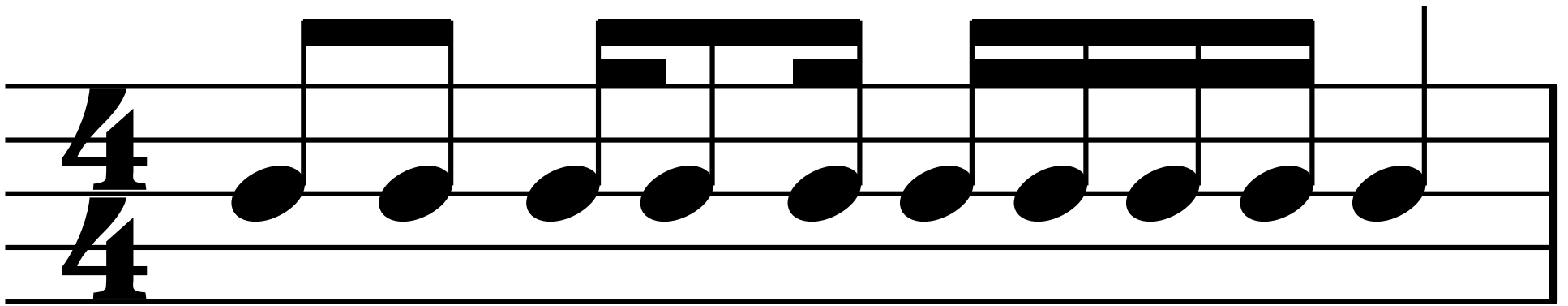
A musical staff with five horizontal lines. On the left side, a 4/4 time signature is written vertically. The staff contains ten eighth notes, all positioned on the second line from the bottom. The first three notes are grouped together by a horizontal bracket above them, with a large number '3' centered below the bracket, indicating a triplet. The fourth note is followed by another triplet of three notes, and the fifth note is followed by a final triplet of two notes. The notes are connected by vertical stems.

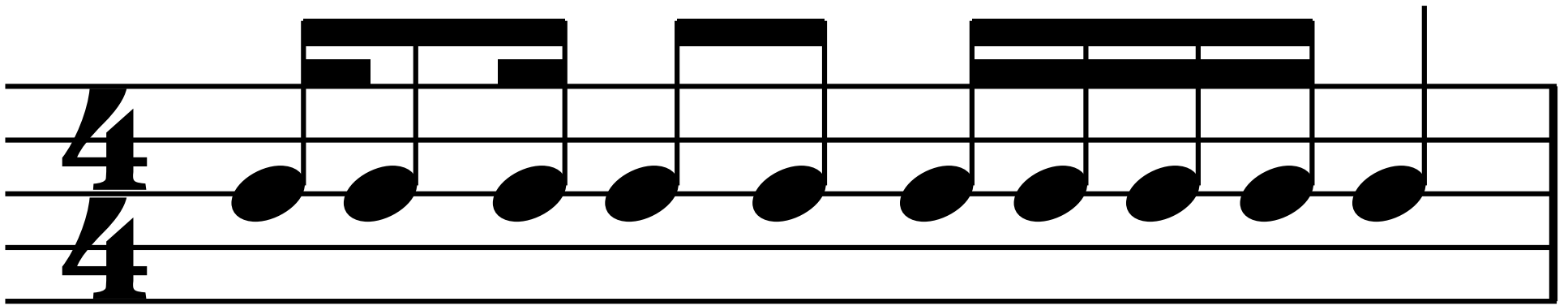
4/4

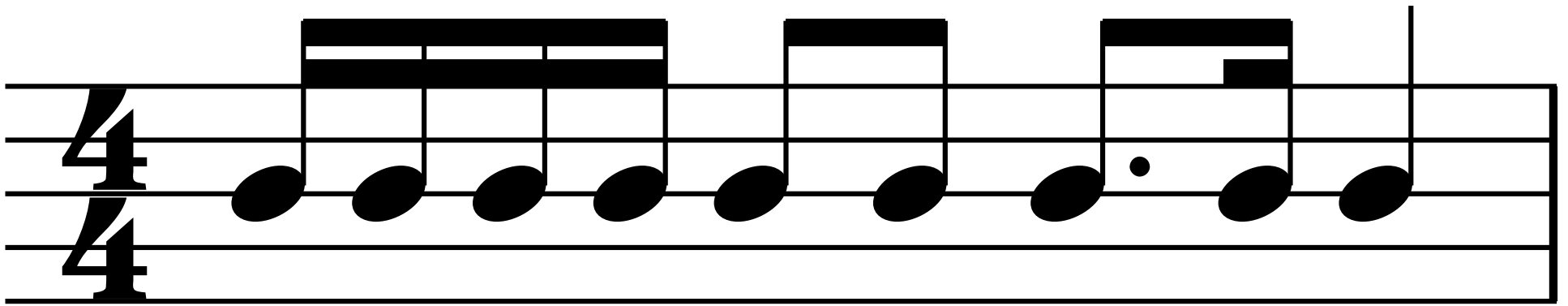
4/4

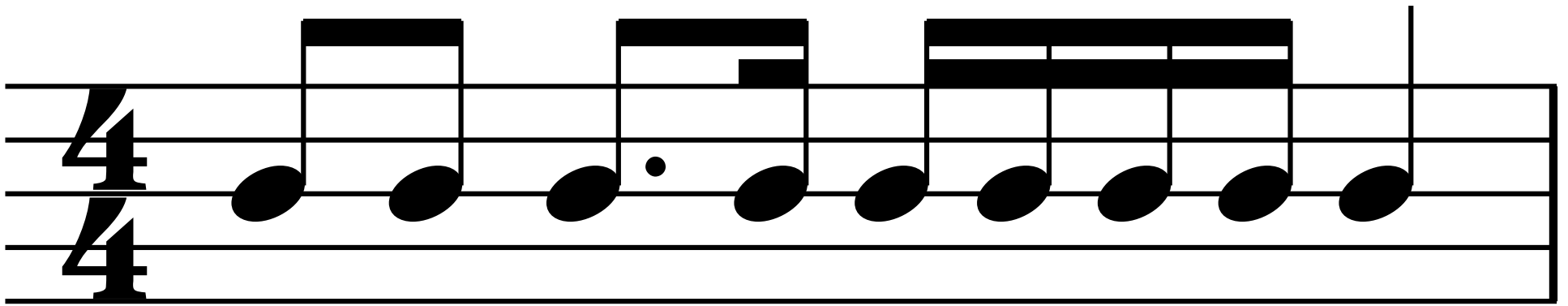
3

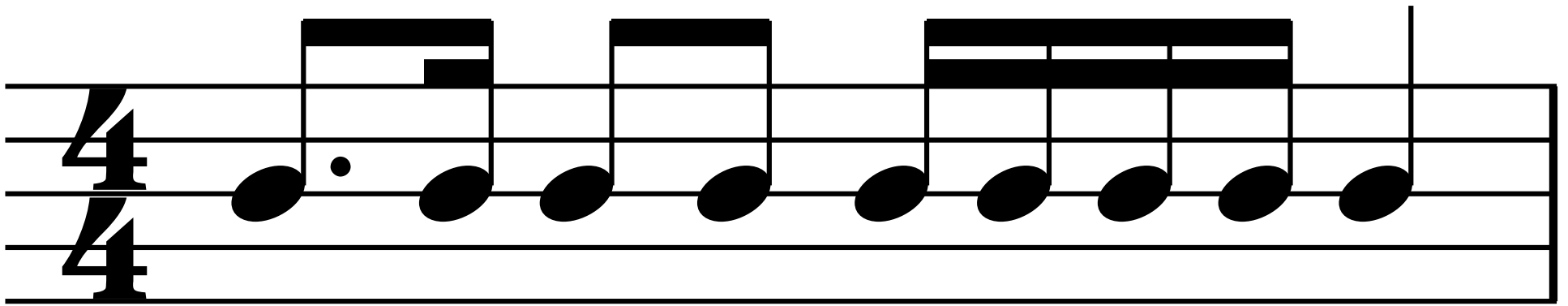


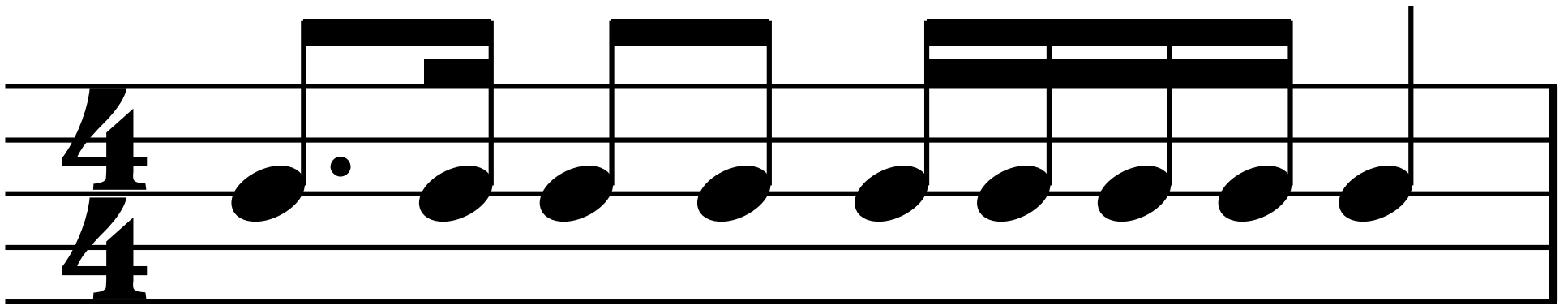












4/4

4/4

3

The image shows a musical staff with four lines. On the left, the time signature '4/4' is written twice. The melody consists of the following notes: a dotted quarter note on the first line, followed by three quarter notes on the second line, and finally three quarter notes on the second line grouped together by a triplet bracket with the number '3' below it.

4/4

4/4

3

4/4

4/4

3

The image shows a musical staff with four lines. On the left, the time signature '4/4' is written twice. The melody is composed of the following notes: a quarter note on the second line, a quarter note on the second line, a quarter note on the second line, a dotted quarter note on the second line, an eighth note on the second line, a quarter note on the second line, a quarter note on the second line, and a quarter note on the second line. A bracket with the number '3' underneath groups the first three quarter notes. A vertical line at the end of the staff indicates a quarter rest.

